



**Aldreds**  
Estate Agents



## NEW BUILD Union Lane

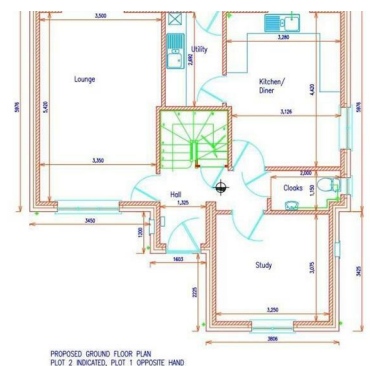
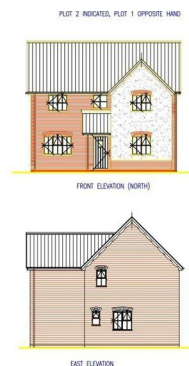
Oulton Village, Lowestoft, NR32 3AX

Asking Price £395,000



Aldreds are delighted to offer this brand new executive 4 bedroom detached house situated in the very desirable Oulton Village location. This quality built family home has a 10 year buildings guarantee and offers versatile accommodation including a wide entrance hall, front to back lounge, open plan kitchen diner, utility room, ground floor bedroom/study and gf WC. To the first floor, there is a central landing, 3 generous bedrooms (Master with ensuite) and a family bathroom. The buyer will have a choice from a selection of quality fitted Howdens kitchens which does have an 'upgrade' option if required.

To the outside of the property, there is a generous frontage with brick weave driveway providing ample car parking space which leads to an oversized brick built garage with electric up and over door, power points and lighting. To the rear of the property, there is a beautiful enclosed family garden. These quality built homes in this beautiful location RARELY become available offering outstanding value for money. Early viewing is advised \*\*\* LAST ONE AVAILABLE WITHIN THIS DEVELOPMENT \*\*\*



### Wide Entrance Hall

Sealed unit uPVC double glazed entrance door, central staircase leading to first floor, underfloor heating, power points

### Cloakroom

Underfloor heating, uPVC double glazed window, low level WC, wall mounted sink with tiled splashback

### Lounge 17'9" x 11'5" (5.42 x 3.5)

Bright and airy living space running from front to back of the property, underfloor heating, TV points, power points, double aspect uPVC double glazed windows, uPVC double glazed patio doors leading to rear garden

### Study/Bedroom 4 10'7" x 10'0" (3.25 x 3.07)

Underfloor heating, double aspect uPVC double glazed windows, power points

### Open Plan Kitchen/Diner 14'6" x 10'9" (4.42 x 3.28)

Double aspect uPVC double glazed windows, Choice of fitted kitchen with Neff integral appliances from Howdens ( upgrade available at cost ) underfloor heating, power points, extractor fan and downlights.

### Utility Room

Underfloor heating, recess and plumbing for white goods, fitted units from kitchen range, sink, extractor fan, double glazed door leading to rear garden

### First Floor

Landing with central galleried staircase, uPVC double glazed window

### Master Bedroom 17'8" x 10'11" (5.41 x 3.35)

Bright and airy bedroom space running from front to back of the property, TV point, power points, radiator, door leading to:

### Ensuite Shower Room

Large shower cubicle with mains fittings and two soakers; vanity unit with wash hand basin, mixer tap and drawers under; further vanity unit with wc with concealed push button cistern and storage cupboards; mirror; frosted window; heated towel rail; downlights. Full height shower boarding dropping to ½ height elsewhere.

### Bedroom 2 12'7" x 10'2" (3.85 x 3.12)

uPVC double glazed window, power points, TV point, radiator

### Bedroom 3 10'7" x 10'0" (max) (3.25 x 3.07 (max))

uPVC double glazed window, power points, TV point, radiator

### Family Bathroom

Vanity unit with wash hand basin, mixer tap and storage drawers; wc; bath with mixer tap; large shower cubicle with mains fittings and two soakers; mirror; heated towel rail; frosted window; downlights; extractor fan. Full height shower boarding dropping to ½ height elsewhere.

### Outside

Generous frontage with brick weave driveway leading to an oversized garage with electric up and over door and EV charging point. The rear has beautiful family space with patio seating and high fencing,

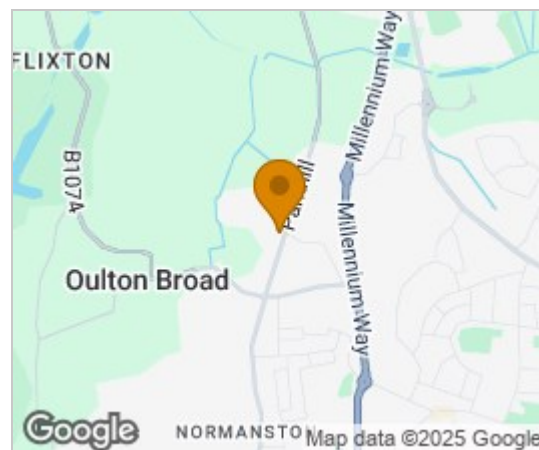
### Services

Mains water and drainage electric

Council Tax - TBC

EPC predicted - B

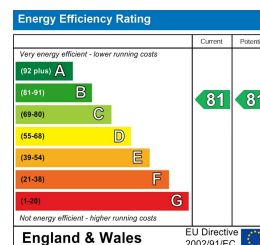
## Area Map



## Floor Plans



## Energy Efficiency Graph



### Disclaimer

These particulars are issued on an understanding that all negotiations shall be conducted through Messrs. Aldreds. Please note: Messrs. Aldreds for themselves and for the vendors or lessors of this property whose agents they are given notice that: 1. Particulars are set out as a general outline only for guidance of intending purchasers or lessees, and do not constitute nor constitute part of, an offer or contract. 2. All descriptions, dimensions, references to condition and necessary permissions for use and occupation, and other details are given without responsibility and any intending purchasers or tenants should not rely on them as statements or representations of fact but must satisfy themselves by inspection or otherwise as to the correctness of each of them. 3. No person in the employment of Messrs. Aldreds has any authority to make or give any representation or warranty whatever in relation to this property. 4. If you are proposing to visit the property and are travelling some distance please check with Aldreds on the issue of availability prior to travelling. 5. Aldreds Property Consultants and associated services may offer additional services to the prospective purchaser for which they will be entitled to receive a commission.

Aldreds are pleased to be working with Mortgage Advice Bureau. They're an award-winning mortgage broker with over 1,400 advisers across the UK, and have access to over 12,000 mortgage products from over 90 lenders. Aldreds Estate Agents Ltd receive a commission of £200 on each completed case. Your home may be repossessed if you do not keep up repayments on your mortgage. There may be a fee for mortgage advice. The actual amount you pay will depend upon your circumstances. The fee is up to 1%, but a typical fee is 0.3% of the amount borrowed. Mortgage Advice Bureau is a trading name of Mortgage Seeker Limited which is an appointed representative of Mortgage Advice Bureau Limited and Mortgage Advice Bureau (Derby) Limited which are authorised and regulated by the Financial Conduct Authority. Mortgage Seeker Limited Registered Office: Lovewell Blake, Sixty Six North Quay, Great Yarmouth, Norfolk, NR30 1HE. Registered in England Number: 03721415. 6. Potential purchasers should check with their providers that the broadband and mobile phone coverage they would require is available.

143 London Road North, Lowestoft, Suffolk, NR32 1NE

Tel: 01502 565432 Email: [lowestoft@aldreds.co.uk](mailto:lowestoft@aldreds.co.uk) <https://www.aldreds.co.uk/>

Registered in England Reg. No. 08945751 Registered Office: 17 Hall Quay, Great Yarmouth, Norfolk NR30 1HJ Directors: Mark Duffield B.S.c. FRICS. Dan Crawley MNAEA Paul Lambert MNAEA